

FULL FAIRING SUZUKI GSX-R750/600 【Part No. 510-571-1000】

- Be sure to read this manual carefully before starting to work.
- While in the installation, keep it at hand and proceed by following the procedure.
- This manual must be retained until the product is scrapped.

This product is designed for the racetrack use ONLY. Do not use this product on the public road. When use this product, confirm race regulation before installation.

! DANGER : Indicates a potential hazard that could result in death, injury or engine breakdown.

! CAUTION : Indicates a potential hazard that could result in motorcycle damage.

REFERENCE : Indicates special information for smooth work.

● Applicable Model

SUZUKI : GSX-R750/600 L1

! DO NOT use it for any other models.

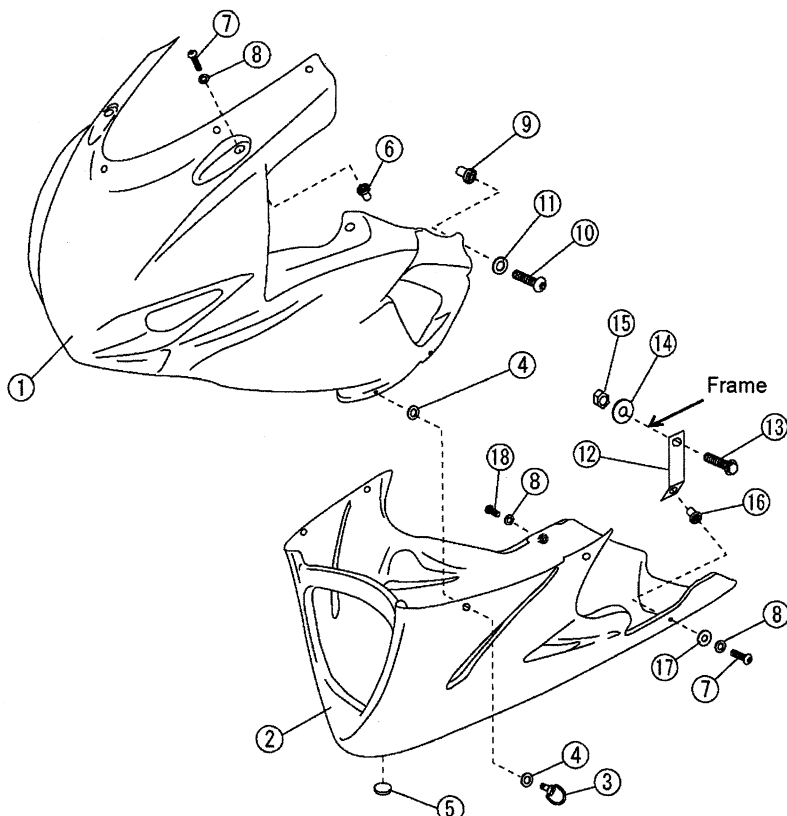
● Specifications

Applicable to FIM regulation Supersport and Superstock class.

● Other Necessary Parts

■ Screen[Part No. 520-571-0000]

● KIT Contents



No.	Part No.	Description	Q'ty
1	510-571-0010	Upper fairing	1
2	510-571-0020	Under fairing	1
3	837-050-0100	Quick fastener	4
4	804-050-0110	Washer(Plastic)	8
5	529-567-0000	Under fairing Drain plug	1
6	829-000-3533	M5 Nut	2
7	803-205-3020	Button bolt M5 x 20 SUS	3
8	812-205-0000	Washer M5	4
9	829-000-4644	M6 Nut	2
10	803-206-4025	Button bolt M6 x 25 SUS	2
11	812-206-0000	Washer M6	2
12	523-508-2020	Bracket	1
13	805-306-4025	Flange bolt M6 x 25 SUS	1
14	812-206-1601	Waser M6 x 16 x 1.0	1
15	820-006-1000	U Nut M6	1
16	829-000-3522	M5 Nut	1
17	812-805-0000	Rubber washer	1
18	803-205-3015	Button bolt M5 x 15 SUS	1