



EXHAUST CONTROL VALVE CANCELLER

Product information



Be sure to read the instruction carefully before starting the work. It is necessary to follow the contents to install Yoshimura product.

CAUTION Be sure not to damage each parts during installation.

CAUTION Torque specification must be followed. If neglected, it may cause bolt and nut to fall off and damage to Yoshimura product and motorcycle.

CAUTION While installing this product, refer Suzuki genuine service manual and installation instruction manual of Yoshimura Full System as well as this manual.

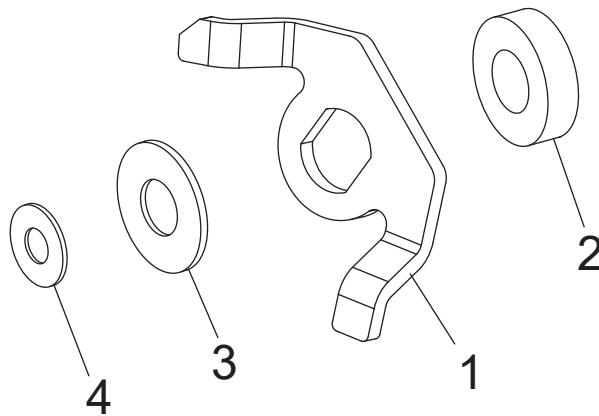
1. Product Information:

Description	Exhaust Control Valve Canceller
Part Number	194-519-0021

2. Contents:

No.	Descriptions	Part No.	Q'ty	No.	Descriptions	Part No.	Q'ty
1	Exhaust Control Valve Canceller Bracket	148-984-0021	1	3	Washer M12	812-512-1815	1
2	Aluminum Spacer 12-20-7	860-012-2007	1	4	Washer M5	812-205-1512	1

Parts Diagram



3. Installation steps

1) Check all the component parts are in hand.

2) According to Suzuki service manual, remove exhaust valve wire from stock exhaust system.

DANGER Do not turn on ignition switch before complete step 5). If neglected, it may cause serious damage to Exhaust Control Valve Actuator (EXCVA).

3) Remove motor unit from motorcycle after disconnecting coupler and take exhaust valve wires off motor unit.