

HONDA CB400SF/SB STREET SPORTS SLIP-ON R-77J STAINLESS END / CARBON END

Be sure to read the instruction carefully before starting the work. It is necessary to follow the contents to install the Yoshimura Slip-on.

1. Product Information :

Description	Honda CB400SF/SB Street Sports Slip-on R-77J	Part Number (Stainless End)	Stainless Sleeve ; 180-458-5V50
	Stainless End / Carbon End		Metal Magic Sleeve ; 180-458-5V20
Cyclone Type	HSR458S77C1	Part number (Carbon End)	Titanium Sleeve ; 180-458-5V80
Main Material	Stainless Steel		Stainless Sleeve ; 180-458-5W50
Weight [STD 4.4kg]	Stainless End / (SSS) & (SMS) ; 2.8kg, (STS) ; 2.6kg		Metal Magic Sleeve ; 180-458-5W20
	Carbon End / (SSC) & (SMC) ; 2.7kg, (STC) ; 2.5kg		Titanium Sleeve ; 180-458-5W80

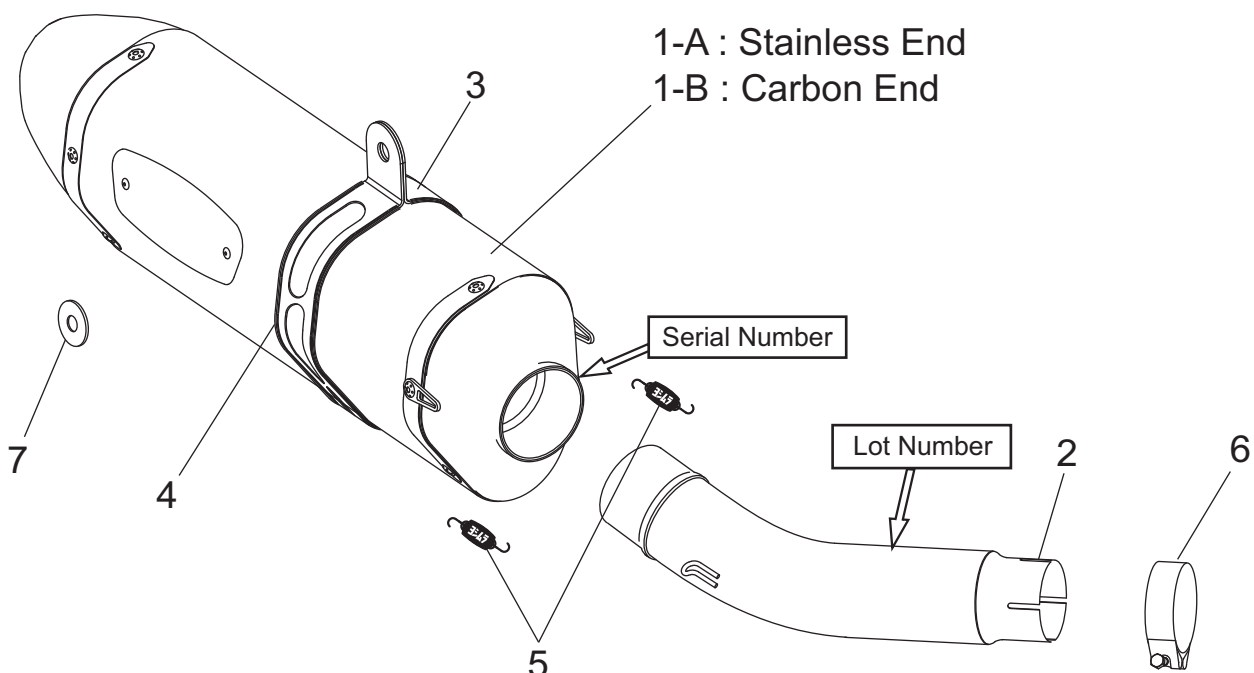
2. Applicable Model :

Model	HONDA CB400 Super Four / Super Bol D'or
Type of Engine	NC42E

3. Contents :

No.	Descriptions	Part No.	Q'ty	No.	Descriptions	Part No.	Q'ty
1-A	Silencer Assy, Stainless Sleeve	186-225-5V50	1	2	Tailpipe	115-458-5V00	1
	Silencer Assy, Metal Magic Sleeve	186-225-5V20		3	Silencer Band	162-CAX-1121	1
	Silencer Assy, Titanium Sleeve	186-225-5V80		4	Silencer Band Rubber	896-016-0835	1
1-B	Silencer Assy, Stainless Sleeve	186-225-5W50	1	5	Exhaust Spring	118-001-0000	2
	Silencer Assy, Metal Magic Sleeve	186-225-5W20		6	Clamp Band 47-51	162-777-4751	1
	Silencer Assy, Titanium Sleeve	186-225-5W80		7	Washer M8x26	812-108-2600	1

Parts Diagram



! Note and record the weight of silencer assy before installation for inner wool maintenance.