

## SUZUKI GSX-S1000/F / KATANA OPTION EXHAUST PIPE

Be sure to read the instruction carefully before starting the work. It is necessary to follow the contents to install Yoshimura product.



- CAUTION** Before beginning installation, let motorcycle cool down.
- CAUTION** Be sure not to damage each part during installation.
- CAUTION** Torque specification must be followed. If neglected, it may cause bolt and nut to fall off and damage to Yoshimura product and motorcycle.
- CAUTION** Installation of this product is required rear suspension removal. Follow the procedures in Genuine service manual for the suspension removal and installation.

### 1. Product Information :

Description	SUZUKI GSX-S1000/F / KATANA OPTION EXHAUST PIPE	Cyclone Type	S196S11C2
Part Number	:143-196-5F00	Main Material	Stainless steel
		Weight [STD : 8.0kg]	4.2kg

### 2. Applicable Model :

Applicable Model	SUZUKI GSX-S1000/F / KATANA		
	Yoshimura EEC Slip-On R-11 Single Exit only		
Application	<SUZUKI GSX-S1000/F EEC Slip-On R-11> Part number : 1A0-196-5E**		<SUZUKI KATANA EEC Slip-On R-11 Euro4> Part number : 1F0-199-5E**
		<SUZUKI GSX-S1000/F EEC Slip-On R-11 Euro4> Part number : 1F0-196-5E**	

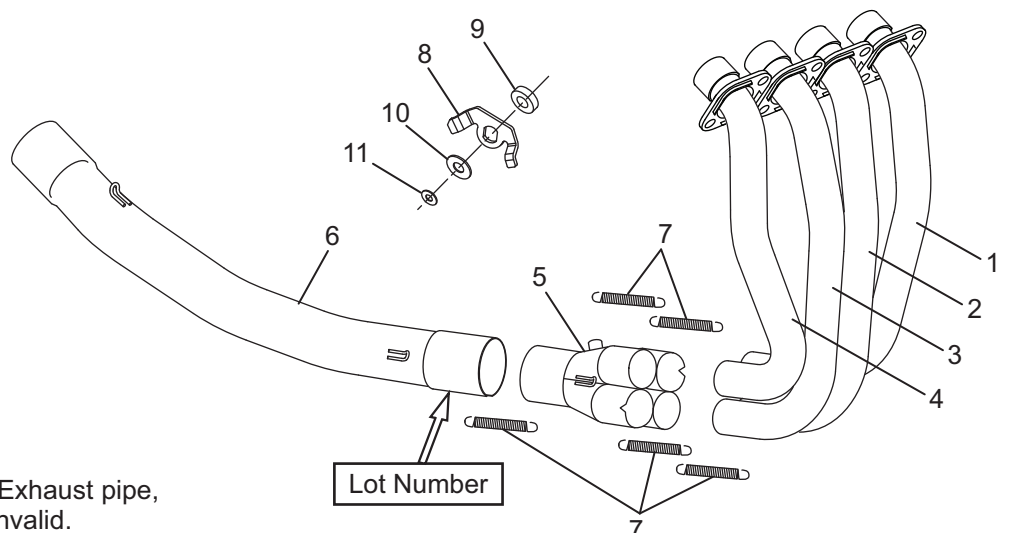
### 3. Contents:

No.	Descriptions	Part No.	Q'ty	No.	Descriptions	Part No.	Q'ty
1	Exhaust Pipe #1	181-196-5F00	1	7	Exhaust Spring (Long)	118-000-1000	5
2	Exhaust Pipe #2	182-196-5F00	1	8	Exhaust Control Valve Canceller Bracket	148-984-0021	1
3	Exhaust Pipe #3	183-196-5F00	1	9	Aluminum Spacer 12-20-7	860-012-2007	1
4	Exhaust Pipe #4	184-196-5F00	1	10	Washer M12	812-512-1815	1
5	Exhaust Collector	119-196-5000	1	11	Washer M5	812-205-1512	1
6	Tailpipe	185-196-5F00	1	*	Spring Inner Tube	118-000-1100	5

### 4. Optional Part :

Description	Part No.
SILENCER BRACKET SET for GSX-S1000/F	194-196-0010

### Parts Diagram



#### CAUTION

In combination with this Option Exhaust pipe, the EEC Approval of Slip-on is invalid.