

YAMAHA YZF-R1/M STREET SPORTS SLIP-ON R-11Sq TYPE-R

Be sure to read the instruction carefully before starting the work. It is necessary to follow the contents to install Yoshimura product.

Product information



1. Product Information:

| | | | | |
|-------------|---|-----------------|---------------|--|
| Description | YAMAHA YZF-R1/M STREET SPORTS SLIP-ON R-11Sq TYPE-R | | | |
| Part Number | Metal Magic Sleeve (SMC) | : 170-38A-L12G0 | Cyclone Type | Y38AS1QC2 |
| | Satin Finish Sleeve (SSFC) | : 170-38A-L13G0 | Main Material | Stainless steel |
| | Titanium Blue Sleeve (STBC) | : 170-38A-L16G0 | Weight | (SMC) & (SSFC) : 4.2kg (STBC) : 4.0kg |
| | | | [STD : 7.9kg] | |

2. Applicable Model :

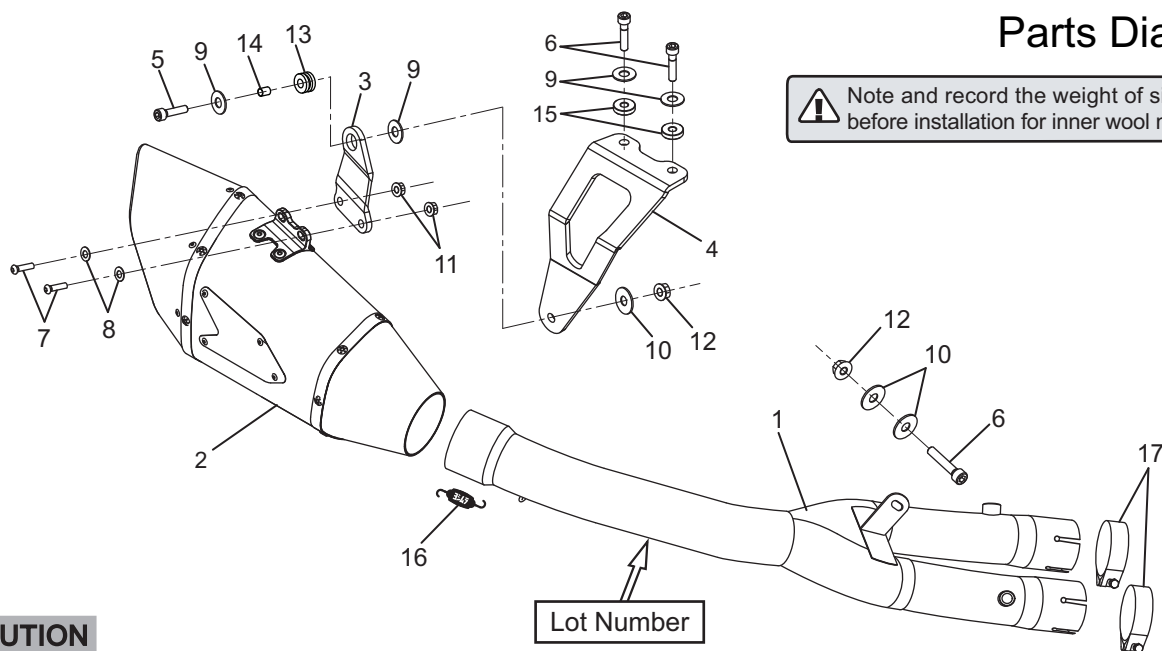
| | |
|-------|-----------------------------------|
| Model | YAMAHA YZF-R1(15-) / YZF-R1M(15-) |
|-------|-----------------------------------|

3. Contents:

| No. | Descriptions | Part No. | Q'ty | No. | Descriptions | Part No. | Q'ty |
|-----|------------------------------------|---------------|------|-----|------------------|--------------|------|
| 1 | Racing Mid Pipe | 185-38A-5450 | 1 | 9 | Washer M8x20 | 812-108-2000 | 4 |
| 2 | Silencer Assy Metal Magic Sleeve | 1F6-38A-L12G0 | 1 | 10 | Washer M8x26 | 812-108-2600 | 3 |
| | Silencer Assy Satin Finish Sleeve | 1F6-38A-L13G0 | | 11 | Flange Nut M6 | 823-006-1000 | 2 |
| | Silencer Assy Titanium Blue Sleeve | 1F6-38A-L16G0 | | 12 | Flange Nut M8 | 823-008-1250 | 2 |
| 3 | Silencer Bracket #1 | 161-38A-0240 | 1 | 13 | Grommet Rubber | 875-511-1006 | 1 |
| 4 | Silencer Bracket #2 | 161-38A-0210 | 1 | 14 | Grommet Spacer | 850-108-1010 | 1 |
| 5 | Cap Bolt M8x30 | 800-208-5030 | 1 | 15 | Spacer 8-20-5 | 850-008-2005 | 2 |
| 6 | Cap Bolt M8x40 | 800-208-5040 | 3 | 16 | Exhaust Spring | 118-001-0000 | 1 |
| 7 | Button Bolt M6x20 | 803-206-4020 | 2 | 17 | Clamp Band 55-59 | 162-022-5559 | 2 |
| 8 | Washer M6x13 | 812-106-1310 | 2 | | | | |

4. Optional Part :

| Description | Part No. |
|----------------------|--------------|
| SILENCER BRACKET SET | 194-38A-0020 |



CAUTION

In combination with Racing Mid Pipe, the EEC Approval is not valid.

DANGER

When this Racing Mid Pipe is installed, the exhaust gas becomes leaner. It requires the readjustment of injection setting by Bazzaz Z-Fi or similar equipment. If neglected, it may cause engine damage.